



## J.E. ADAMS INDUSTRIES OWNERS MANUAL

MODEL# 29000-29003  
29000UNI-29003UNI  
29000-2M thru 29003-2M

- PAGE 2                      PRODUCT INFORMATION
- PAGE 3                      SPECIFICATIONS
- PAGE 4                      IMPORTANT SAFETY INFORMATION
- PAGES 4-5                  INSTALLATION
- PAGES 5-8                  PROGRAMMING
- PAGE 8                      OPERATING
- PAGE 8                      MAINTENANCE
- PAGES 9                      TROUBLESHOOTING
- PAGES 10-14                PARTS LIST
- PAGE 15-18                WIRE DIAGRAMS

# **PRODUCT INFORMATION**

**Please take a moment to fill out the information below in order to aid us with any future sales or service inquiries. Model number and serial number information can be found on the serial tag located inside the control box and/or on the lower exterior of the can. Key number can be found on the tag that comes attached to the keys. There may be more than one key number depending on unit.**

**Please keep this information with your records.**

**MODEL#:**\_\_\_\_\_

**SERIAL#:**\_\_\_\_\_

**KEY NUMBER(S):**\_\_\_\_\_

**DATE PURCHASED:**\_\_\_\_\_

**DISTRIBUTOR:**\_\_\_\_\_

**J.E. Adams Industries  
1025 63<sup>rd</sup> Ave. S.W.  
Cedar Rapids, IA 52404  
1-800-553-8861  
[www.jeadams.com](http://www.jeadams.com)**

## SPECIFICATIONS:

Unit specifications: *(29000-29003, 29000UNI-29003UNI)*

Voltage: 120VAC, 60Hz  
Amperage: (1)30 amp service is required for this unit  
Weight: 260 lbs with pallet attached

Vac specifications: *(29000-29003, 29000UNI-29003UNI)*

Motors: (3) 120VAC Vacuum motor  
Fuses: (3) 10 amp inline fuses

Shampoo specifications: *(29000-29003, 29000UNI-29003UNI)*

Compressor: (1) Thomas 120VAC, 1/12<sup>th</sup> hp compressor  
Peristaltic pump: (2) Thomas peristaltic pumps, 12VDC

---

Unit specifications: *(29000-2M thru 29003-2M)*

Voltage: 120v, 60Hz  
Amperage: (1)20 amp service is required for this unit  
Weight: 260 lbs with pallet attached

Vac specifications: *(29000-2M thru 29003-2M)*

Motors: (2) 120VAC Vacuum motor  
Fuses: (2) 10 amp inline fuses

Shampoo specifications: *(29000-2M thru 29003-2M)*

Compressor: (1) Thomas 120v, 1/12<sup>th</sup> hp compressor  
Peristaltic pump: (2) Thomas peristaltic pumps, 12VDC

NOTE: "UNIT INTENDED FOR COMMECIAL USE ONLY"

**Installation of 29000UNI, 29001UNI, 29002UNI and 29003UNI units are to be installed only by a qualified Unitec represented distributor or installer. Failure to do so may result in improper installation and may not be configured properly.**

## IMPORTANT SAFETY INSTRUCTIONS

When using an electrical appliance, basic precautions should always be followed, including the following:

### READ ALL INSTRUCTIONS BEFORE USING (THIS APPLIANCE)

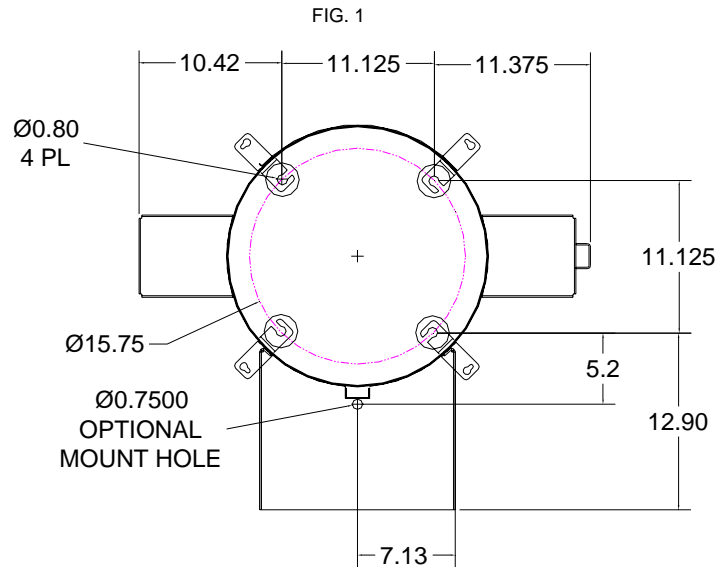
#### **WARNING – To reduce the risk of fire, electric shock, or injury:**

- Do not use on wet surfaces.
- Use only as described in manual. Use only manufactures recommended attachments.
- Do not allow to be used as a toy. Close attention is necessary when used by or near children.
- Do not put any object into openings. Do not use with any opening blocked; keep free of dust, lint, hair and anything that may reduce air flow.
- Keep hair, loose clothing, fingers, and all parts of body away from openings and moving parts.
- Do not use to pick up flammable or combustible liquids, such as gasoline, or use in areas where they may be present.
- "Do not pick up anything that is burning or smoking, such as cigarettes, matches, or hot ashes."
- "DO not use without dust bag and/or filters in place."

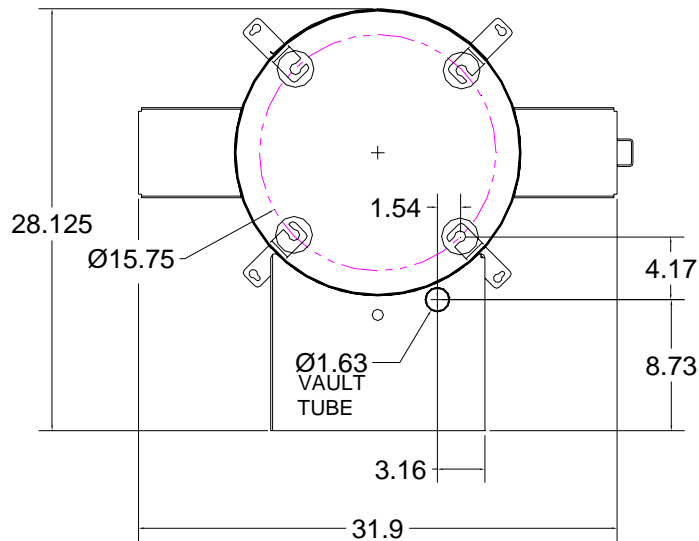
### SAVE THESE INSTRUCTIONS

#### **Installation Instructions:**

- Determine location to mount unit ("**DANGER**" **"THIS EQUIPMENT INCORPORATES PARTS SUCH AS SWITCHES, MOTORS, OR THE LIKE THAT TEND TO PRODUCE ARCS OR SPARKS THAT CAN CAUSE AN EXPLOSION. WHEN LOCATED IN GASOLINE-DISPENSING AND SERVICE STATIONS INSTALL AND USE AT LEAST 20 FEET (6 M) HORIZONTALLY FROM THE EXTERIOR ENCLOSURE OF ANY DISPENSING PUMP AND AT LEAST 18 INCHES (450 MM) ABOVE A DRIVEWAY OR GROUND LEVEL."**
- Run 30 amp service to that location (*NOTE UNIT HAS WIRE PROVIDED UNDERNEATH TO CONNECT INCOMING POWER SUPPLY*)
- **Grounding Instructions:** This appliance must be connected to a grounded metal, permanent wiring system; or an equipment-grounding conductor must be run with the circuit conductors and connected to the equipment-grounding terminal or lead on the appliance.
- Mount unit to location and use fig. 1 for mount pattern
- If unit is vault ready configuration see fig. 1 for mounting and fig. 2 for vault tube location.



FRONT OF UNIT  
FIG. 2 (VAULT TUBE LOCATION)  
TOP VIEW



- Once unit has been installed use 5871B8 cap plugs supplied with unit to seal holes in canister bottom located in lower cleanout door. Then connect to power, insert shampoo and spot formula into bottom door and attach lids to appropriate bottles.
- Turn unit on and move to program instructions

## Programming Instructions:

### Coin acceptor:

- No programming to acceptor needed if unit was purchased with the standard Imomex Z32 electronic acceptor (8149-92 our part number) is pre-programmed to accept US quarters, .984 tokens, US \$1 coin and 1.073 token. Acceptor is pre-programmed before it is sent to J.E. Adams.
- If different acceptor was purchased, see additional literature sent along with unit for programming info.

#### Bill acceptor:

- Bill acceptor comes pre programmed from J.E. Adams and should not require any changes. If additional programming is needed to acceptors please refer to additional literature sent along with this unit.

#### Display:

- Unit may be programmed when received depending on information given at that the time of order.
- To program follow the instructions below.

#### Display programming with remote:

- 1) Press the red power button.
- 2) Timer will display 0000. At this time type in 4 digit access code. Note code will be 1234 until changed by customer.
- 3) Once code has been entered display should read ok. If display does not read ok, repeat step 1 and 2.
- 4) Press **CH +** button. Timer will display coin value. This should \$.25 and should not be changed.
- 5) Press the **CH +** button. Display will now read (**A: 30**) or may be a different time. (**A**) Will be the time per coin for the **VAC**. Set desired time per coin by using the **VOL –** to decrease or the **VOL +** to increase. Once time is entered move to next step.
- 6) Press the **CH +** button. Display will now read (**B: 30**) or may be different time. (**B**) Will be the time per coin for **TURBO**. Set desired time per coin by using the **VOL –** to decrease or the **VOL +** to increase. Once time is entered move to next step.
- 7) Press the **CH +** button. Display will now read (**C: 30**) or may be different time. (**C**) Will be the time per coin for **SHAMPOO**. Set desired time per coin by using the **VOL –** to decrease or the **VOL +** to increase. Once time is entered move to next step.
- 8) Press the **CH +** button. Display will now read **D**. **D** is not used.
- 9) Press the **CH +** button. Display will now read **E**. **E** is not used.
- 10) Press the **CH +** button. Display will now read **F**. **F** is not used.
- 11) Press the **CH +** button. Display will now read (on A). This is the number of coins to start **VAC**. Use the **VOL –** and **VOL +** to adjust. Once this is done press the **CH +** button and repeat for (B) **TURBO** and (C) **SHAMPOO**.
- 12) Press the **CH +** button. Display will read bonus time. Set if desired. See explanation at the end programming instructions.
- 13) Press the **CH +** button. Display will read debit mode. Set if desired. See explanation at the end programming instructions.
- 14) Press the **CH +** button. Display will read delayed start. Set if desired. See explanation at the end programming instructions.
- 15) Press the **CH +** button. Display will read **HLxx**. Set if desired. See explanation at the end programming instructions.
- 16) Press the **CH +** button. Display will read Restart off or restart on depending on what is set. Restart off will require a person to put in full amount after unit is

- turned off to reactivate. Restart on allows for additional coins to be put in the machine to keep unit running. To set use ***VOL –*** or ***VOL +*** to change.
- 17) Press the ***CH +*** button. Display will now read ***STD*** or ***USER*** or ***MIX***. To make a custom message use ***VOL +*** button to scroll to USER. At this point press and hold ***CH +*** button until original message appears. At this time you may change the message simply by using the ***VOL –*** or ***VOL +*** buttons to change letters. ***Once message has been entered you must put the symbol / at the end of message.*** This will tell display that this is the end of the message.
- 18) Press the ***CH +*** button now 5 more times to exit programming.
- 19) Unit should now be programmed.

#### Program definitions:

- Bonus time settings:
  - Amount of time set in bonus time is added to regular time per coin/pulse(e.g. if you want to give 45 seconds for bonus time and your regular time per coin is 30 seconds, you would set bonus time at 00:15)
  - Bonus is disabled by setting bonus time to 00:00.
  - If bonus time is set to less than one minute, bonus time is added when bonus coin is reached and every coin after that until time expires.
  - If bonus time is set at 1:00 or more, bonus will be a “one time” bonus. Bonus time will only be added for bonus coin or multiples of bonus coin (e.g. 16<sup>th</sup> coin, 32<sup>nd</sup> coin, etc). Any other coin will on receive regular time per coin.
  - If bonus time is set to 99:00, when bonus coin is deposited, timer will show “-on-” and timer will continue to run until coin switch wire is shorted to ground by a loop detector or other switch closure for a minimum of two seconds.
- Debit and credit mode:
  - Debit mode: As coins are deposited display shows “\$1.75 MORE, \$1.50 MORE, \$1.25 MORE” etc. until start price is reaches. Once start price is reached display switches to time accumulating until no more coins have been deposited.
  - Credit mode: As coins are deposited display shows money accumulating (\$.25, \$.50, \$.75 etc). If timer is also set to delayed start mode timer will continue to show money accumulating until no more coins have been deposited. If timer is set to instant start, as soon as start price is reached, timer will change to time counting down.
  - Both mode: As coins are deposited display shows money accumulating (\$.25, \$.50, \$.75 etc). If start price is not reached, after 5 seconds timer will alternate between “add \$x.xx more” and amount of money already deposited.

### Display programming with push button:

- Unit can be programmed using buttons that are located inside display. One is labeled **S2**, which is used to change from item to item. One is labeled **S1** which is used to set desired value. If you hold down **S1** this will cause numbers to decrease. If you repeatedly push **S1** numbers will increase.
- When programming with buttons use same instructions as remote except for the following. Where it says to press **CH +** use **S2** and where it says to use **VOL +** or **-** use **S1**.

### **Operating Instructions:**

- Select desired function.
- Insert coins or bills to start desired function.
- If shampoo/spot is selected, it is recommended that you vacuum before applying formula.
- If other function is selected other than original selected item unit will recalculate timer based on the amount of money it takes to start the specific function.
- Once service is used, hang up hose.

### **Operating Instructions 29000UNI-29003UNI:**

- Select desired function.
- Insert coins or bills or swipe credit card to start desired function. When credit card is selected swipe card and wait for activation.
- If shampoo/spot is selected, it is recommended that you vacuum before applying formula.
- If other function is selected other than original selected item unit will recalculate timer based on the amount of money it takes to start the specific function.
- Once service is used, hang up hose.

### **Changing fluids:**

- Disconnect power. Unscrew cap from empty bottle. Remove empty bottle. Insert new bottle into unit. Insert line into bottle and screw cap onto bottle. Reconnect power

### **Maintenance:**

- Filter bags should be taken out weekly and shaken out. Also it might be a good idea to keep a new set of bags on hand so that once a month or longer you can take original bags out and wash them.
- Check vac hose for cracks on a weekly basis.
- Check shampoo and spot formula bottles to assure that they are full.
- Clean canister with a stainless steel cleaner as needed.
- Check motor brushes approx. every 3 months for excessive wear. Motor brushes should be changed if they are shorter than ¼". ***Please disconnect power before doing this.***
- Check all shampoo lines and assembly for any signs of wear.
- All servicing of machine should be conducted by an authorized service representative.

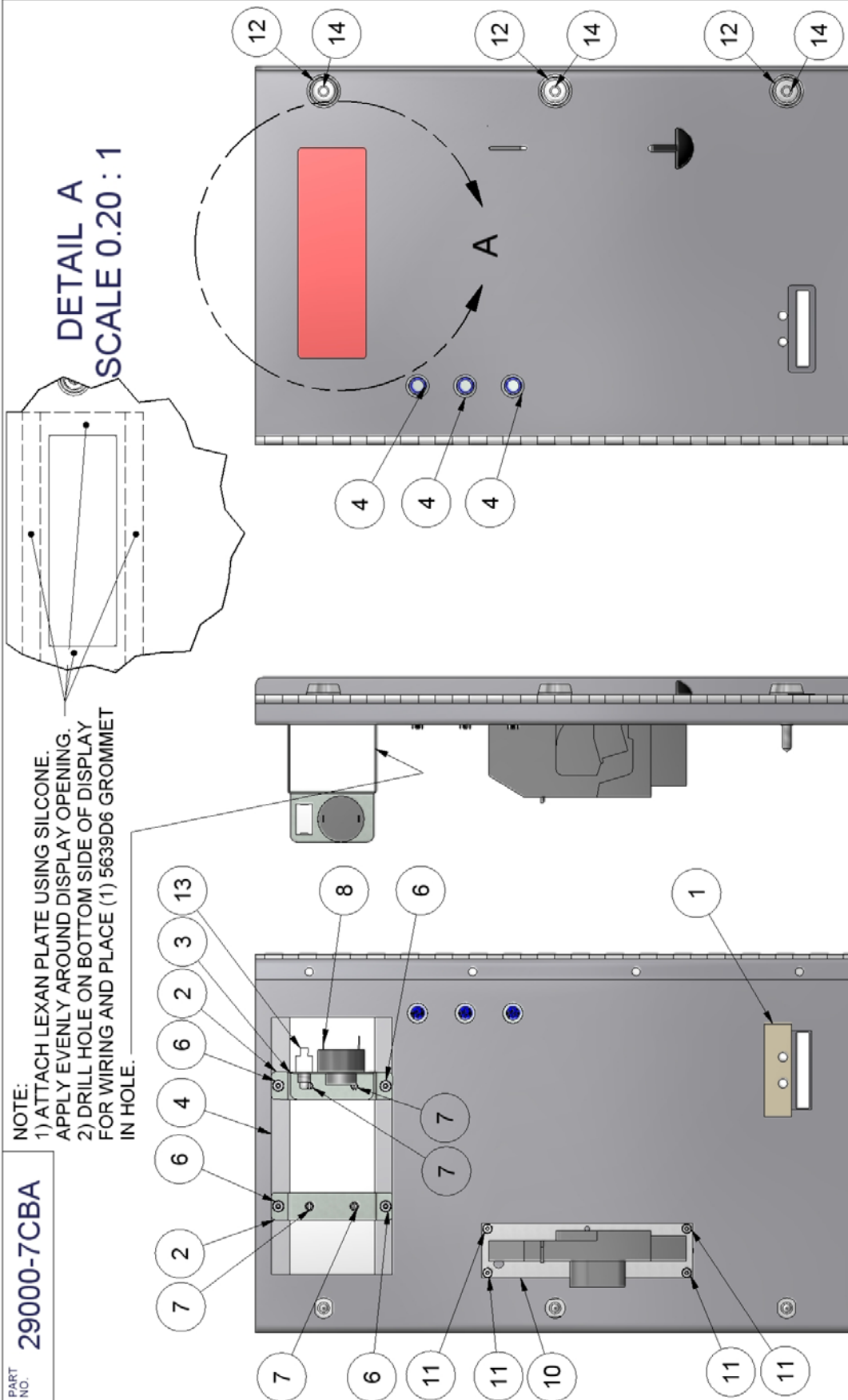


## Troubleshooting: ***DISCONNECT POWER BEFORE SERVICING***

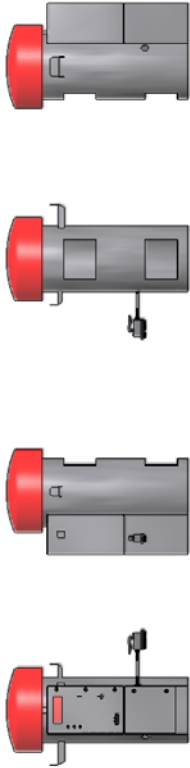
<b>Problem</b>	<b>Possible cause</b>	<b>Solution</b>
Unit is not powered	Breaker inside unit is not in the on position	Flip breaker on
Display is not powering	Breaker inside unit is not in the on position	Flip breaker on
	Check transformer inside main power box in unit. Is there 24VAC at output terminal?	Replace transformer (8131-2)
Display reads "fail"	Coin acceptor putting out continuous pulse	Press mode button on display. If fail does not go away replace coin acceptor. (8149-92)
	Program in display may be lost	Reprogram display. If fail goes away and then comes back, replace battery in display.
Unit keeps blowing my breaker from my incoming power source	Inadequate wire size supplied to machine	Call electrician and install proper wire size for 30amp service versus length or run.
	Wrong size breaker	Install correct breaker( only use wire size that is adequate to handle 30 amp breaker)
Fuses for vac motors keep blowing.	Inadequate wire size supplied to machine	Call electrician and install proper wire size for 30amp service versus length or run.
	Motor brushes may be bad or too short	Replace motor brushes (8055BR)
Unit has lost suction	Vac hose clogged	Clean out debris from vac hose
	Filter bags need cleaned	Clean out filter bags or replace (8076)
	Vac hose is damaged	Replace vac hose (2036)
	Cleanout door gaskets torn or worn	Replace gaskets (8159)
Unit has shut down For no apparent reason	This unit has a reset thermal limiter in the compressor. Unit may have shut down due to excessive heat	Turn off power to the machine and wait for a period of 5 minutes. Reapply power and activate machine.



PART NO. 29000-7CBA		BILL OF MATERIALS			
NOTE:		ITEM	PART NUMBER	DESCRIPTION	QTY
1) ASSEMBLY ALL ITEMS AS SHOWN.		1	29000-199	GASKET, VALIDATOR MOUNT	1
2) USE WIRE ASSEMBLY 00-CB-DOOR TO WIRE THIS DOOR ASSEMBLY. THE 00-CB-DOOR IS LOCATED IN THE 00-CB-WIRE KIT CABLE PACKAGE PURCHASED FROM TIMBERLINE. THE 00-CB-WIRE KIT IS CALLED OUT UNDER THE 29000 TOP LEVEL ASSEMBLY.		2	29000-24	DISPLAY BRACKET	2
3) USE WIRE DIAGRAM S29000_CB_DOOR.		3	29000-25	HORN BRACKET	1
4) DO NOT OVER TIGHTEN PUSH BUTTONS ONTO DOOR. MAKE SURE THEY ARE SNUG AND ORINGS ARE NOT PROTRUDING FROM SIDE OF PUSH BUTTON. IF SO THEY ARE TO TIGHT.		4	00-CB-D-05	BLUE PUSH BUTTON	3
5) APPLY A GENEROUS AMOUNT OF HOT GLUE TO THE BACK OF THE NUT AND SWITCH. THIS WILL KEEP THE NUT FROM LOSENING UP.		4	29000-34	LEXAN WINDOW	1
6) WIRE ASSEMBLY 00-CB-D-06 FOR DISPLAY COMES WIRED TO PLUG DIRECTLY INTO CIRCUIT BOARD. WIRES MUST BE RAN THRU THE HOLE THAT IS DRILLED IN THE BOTTOM OF THE DISPLAY AND WIRED ACCORDING TO CONNECTOR THAT IS SUPPLIED WITH THE DISPLAY. THE YELLOW WIRE WHICH SHOULD BE LABELED D12 MUST GO INTO THE CONNECTOR LABELED 12 AND ALL OTHER WIRES WIRED IN DECENDING ORDER. FAILURE TO WIRE DISPLAY PROPERLY MAY RESULT IN MALFUNCTION OF DISPLAY OR POSSIBLE DAMAGE TO THE CIRCUIT BOARD. IF IN DOUBT ASK QUESTIONS.		5	29000-7CBW	CONTROL DOOR WELDMENT	1
		6	5611D2	NUT, 10-24 UNC KEPP- ZINC	4
		7	5629D2	#8 x 1/2 SELF TAPPING SCREW	4
		8	8000-11	ALARM, LAST COIN ALERT	1
		9	8000-15	BIG DIXMOR DISPLAY	1
		10	8149-92	IMONEX COIN ACCEPTOR - ELECTRIC	1
		11	8157	NUT, #6-32 KEPP NUT STAINLESS	4
		12	8659-24	LOCK COLLAR -SS	3
		13	8726	PUSH BUTTON	1
		14	8958-2	MEDECO SCREW LOCK	3
		15	8000-21	2 POLE FEMALE WAGO CONNECTOR	2
		16	5639D6	GROMMET	1
<div></div>					
REV	NO.	DESCRIPTION		DATE	BY
THIS DOCUMENT SHALL NOT BE REPRODUCED NOR SHALL THE INFORMATION THEREIN BE USED BY OR DISCLOSED TO OTHERS EXCEPT AS AUTHORIZED BY J.E. ADAMS INDUSTRIES					
TITLE				SHAMPOO DOOR ASSEMBLY-W/CB	
UNSPECIFIED TOLERANCES		MATERIAL		CEDAR RAPIDS, IOWA	
1 PL ±.030		SCALE			
2 PL ±.010		DRAWN BY		CHAD K.	
3 PL ±.003		DATE		2/16/2009	
ANGLE ±1.0°		PART NO.		29000-7CBA	
				REV.	

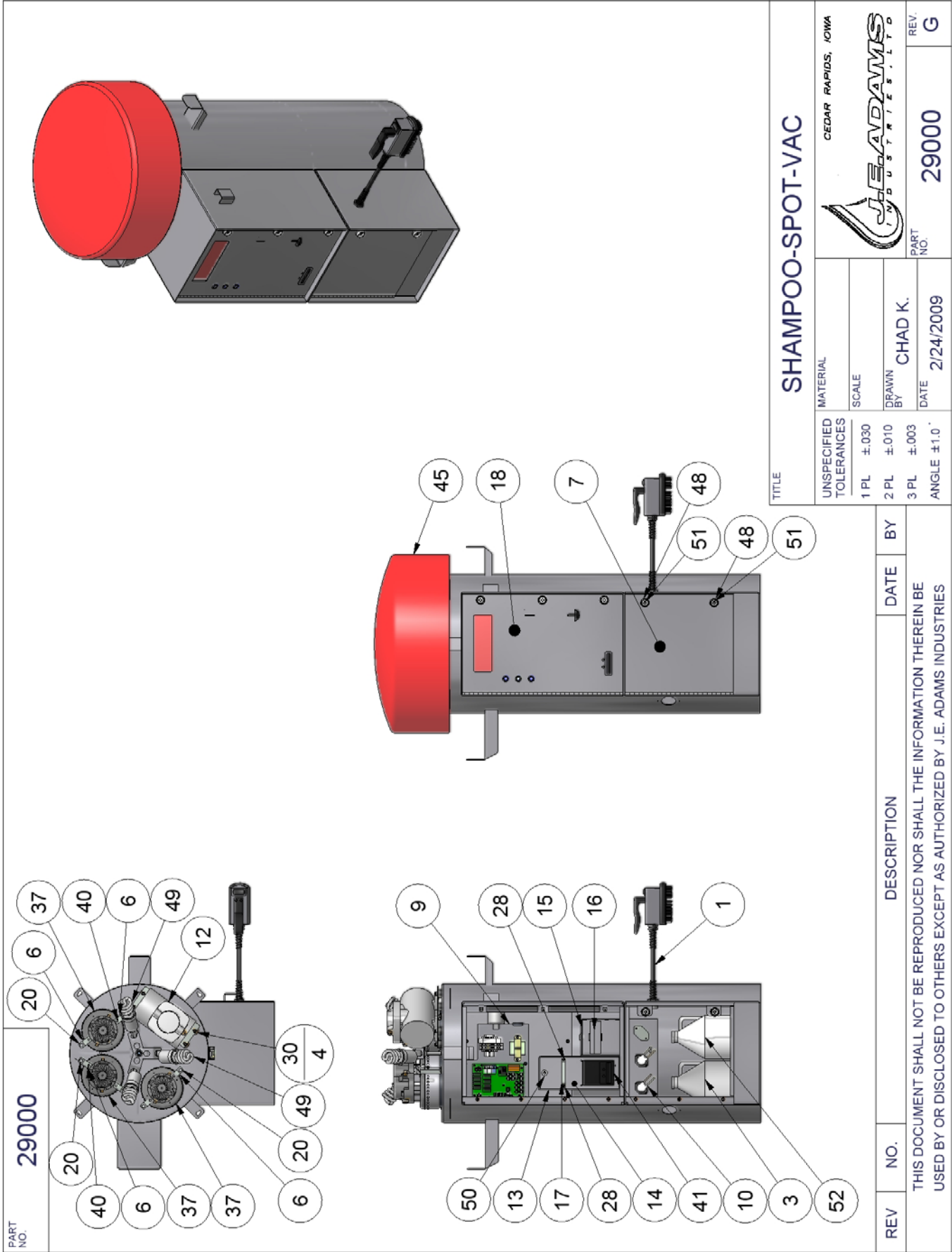


TITLE			
SHAMPOO DOOR ASSEMBLY-W/CB			
UNSPECIFIED TOLERANCES		MATERIAL	CEDAR RAPIDS, IOWA
1 PL	± .030	SCALE	
2 PL	± .010	DRAWN BY	CHAD K.
3 PL	± .003	DATE	2/16/2009
ANGLE	± 1.0°	PART NO.	29000-7CBA
REV	NO.	DESCRIPTION	DATE BY
THIS DOCUMENT SHALL NOT BE REPRODUCED NOR SHALL THE INFORMATION THEREIN BE USED BY OR DISCLOSED TO OTHERS EXCEPT AS AUTHORIZED BY J.E. ADAMS INDUSTRIES			
REV. 29000-7CBA			

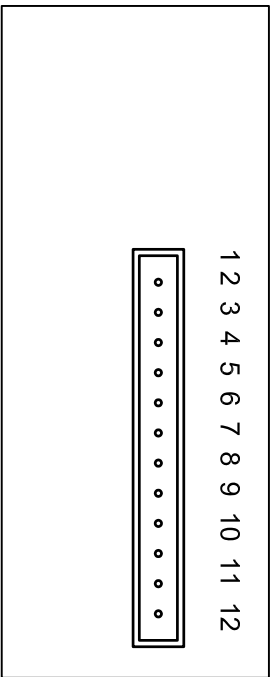
PART NO.		29000	
BILL OF MATERIALS		BILL OF MATERIALS	
ITEM	PART NUMBER	DESCRIPTION	QTY
31	5644D1	CAGE NUT	5
32	5647D2	RIVET 1/8"	16
33	5647D8	RIVET 3/16"	14
34	5871B8	CAP PLUG	8
35	8000-21	2 POLE FEMALE WIRE CONNECTOR	2
36	8000-22	2 POLE MALE WIRE CONNECTOR	2
37	8055	MOTOR, AMETEK 115V	3
38	8057	MOTOR GASKET	3
39	8076	FILTER BAG	4
40	8108	#10 x 1/2 TAP SCREW	6
41	8130-6	MARS 110V BILL VALIDATOR	1
42	8153-1	LATCH	4
43	8159	DOOR GASKET	2
44	8182	DISCONNECT POWER DECAL	2
45	8306	24" PLASTIC DOME	1
46	8549-1	FLEX STRAIN RELIEF	1
47	8615-5W	CLEANOUT DOORS	2
48	8659-24	LOCK COLLAR -SS	2
49	8925	FLOURESCENT BULB	3
50	8958-1	MEDECO SCREW LOCK	2
51	8958-2	MEDECO SCREW LOCK	2
52	9500WIN	WINTER SHAMPOO FORMULA	1
53	B5996-010	10AMP FUSE	3
54	B5997-001	FUSE HOLDER	3
55	8630	CARDBOARD BOX	1
56	00-CB-WIREKIT	COMPLETE WIRE CABLE PACKAGE	1
57	8939	PALLET	1
			
G	5015	CONVERTED UNIT TO CB-5002 CIRCUIT BOARD	2-09
REV	NO.	DESCRIPTION	DATE
THIS DOCUMENT SHALL NOT BE REPRODUCED NOR SHALL THE INFORMATION THEREIN BE USED BY OR DISCLOSED TO OTHERS EXCEPT AS AUTHORIZED BY J.E. ADAMS INDUSTRIES			
TITLE		SHAMPOO-SPOT-VAC	
UNSPECIFIED TOLERANCES		MATERIAL	
1 PL ±.030		SCALE	
2 PL ±.010		DRAWN BY CHAD K.	
3 PL ±.003		DATE 2/24/2009	
ANGLE ±1.0°		PART NO. 29000	
		REV. G	







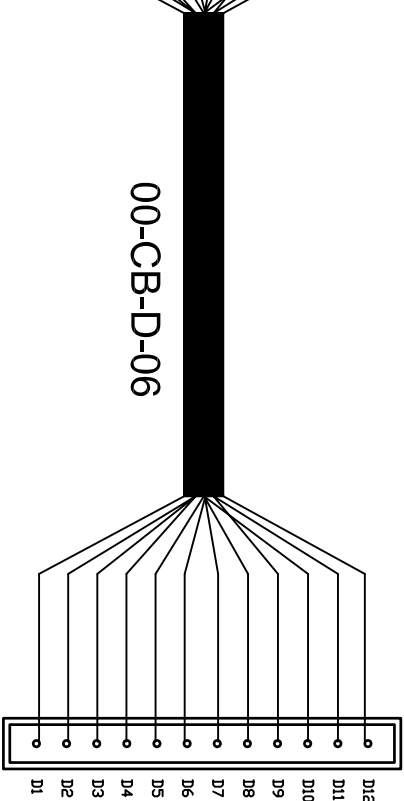
DISPLAY



PLUG INTD  
DISPLAY  
CONNECTOR

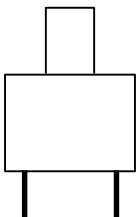


00-CB-D-06



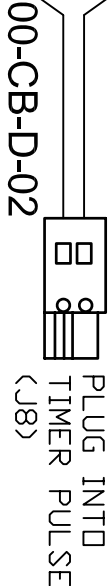
PLUG INTD  
CONNECTOR (J7)

PUSH  
BUTTON

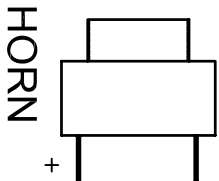


PB-1

PB-2



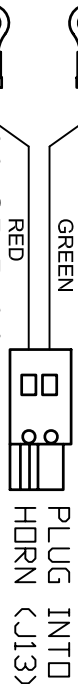
PLUG INTD  
TIMER PULSE  
(J8)



H1

H2

00-CB-D-01



PLUG INTD  
HORN (J13)

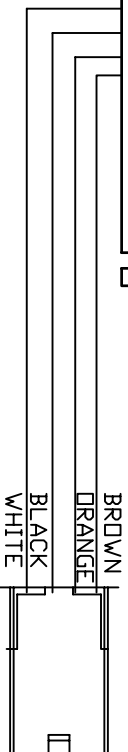
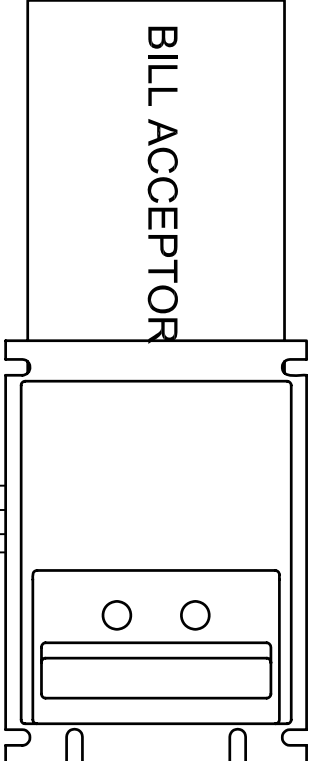
ATTACH TO  
VALIDATOR  
FACPLATE

00-CB-D-07

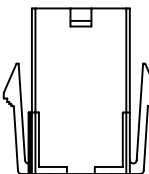


ATTACH TO  
VALIDATOR  
BOX

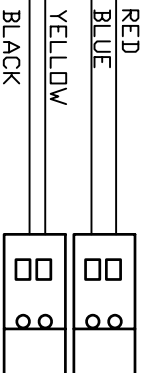
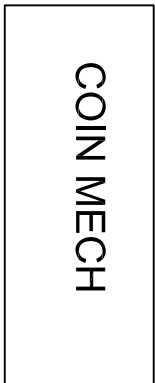
BILL ACCEPTOR



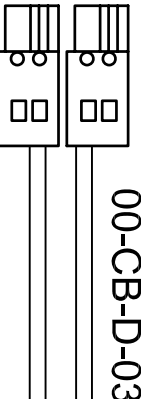
PLUG  
TOGETHER



PLUG INTD  
BILL (J2)



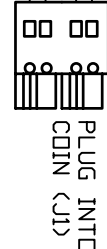
CM2



CM1

CM1

00-CB-D-03



PLUG INTD  
COIN (J1)

THIS SECTION IS FOR USE  
ON 29000UNIT, 29001UNIT,  
29002UNIT AND 29003UNIT  
UNITS ONLY.

B1

00-CB-D-04

TO CM1 CONNECTOR-BLACK WIRE  
TO CM1 CONNECTOR-YELLOW WIRE  
RED/WHITE  
BLUE/WHITE  
BLACK  
WHITE  
GRAY  
PURPLE  
BLUE  
GREEN  
YELLOW  
ORANGE  
RED  
BROWN

TO CM1 CONNECTOR-BLUE WIRE  
TO CM1 CONNECTOR-RED WIRE

VAC



PLUG INTD  
VAC (J6)

TURBO



PLUG INTD  
TURBO (J5)



PLUG INTD  
SHAMPOO (J4)

SHAMPOO/  
SPOT

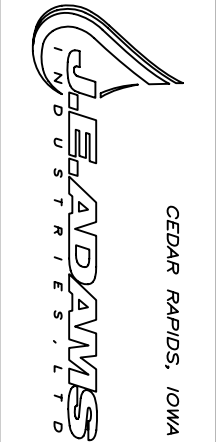
NOT USED ON 29000-2M  
THRU 29003-2M MODELS



B	5891	ADDED NOTE	3-19-10	CK
A	5521	ADDED UNITEC CC TO DIAGRAM	2-10	CK
REV	NO.	DESCRIPTION	DATE	BY

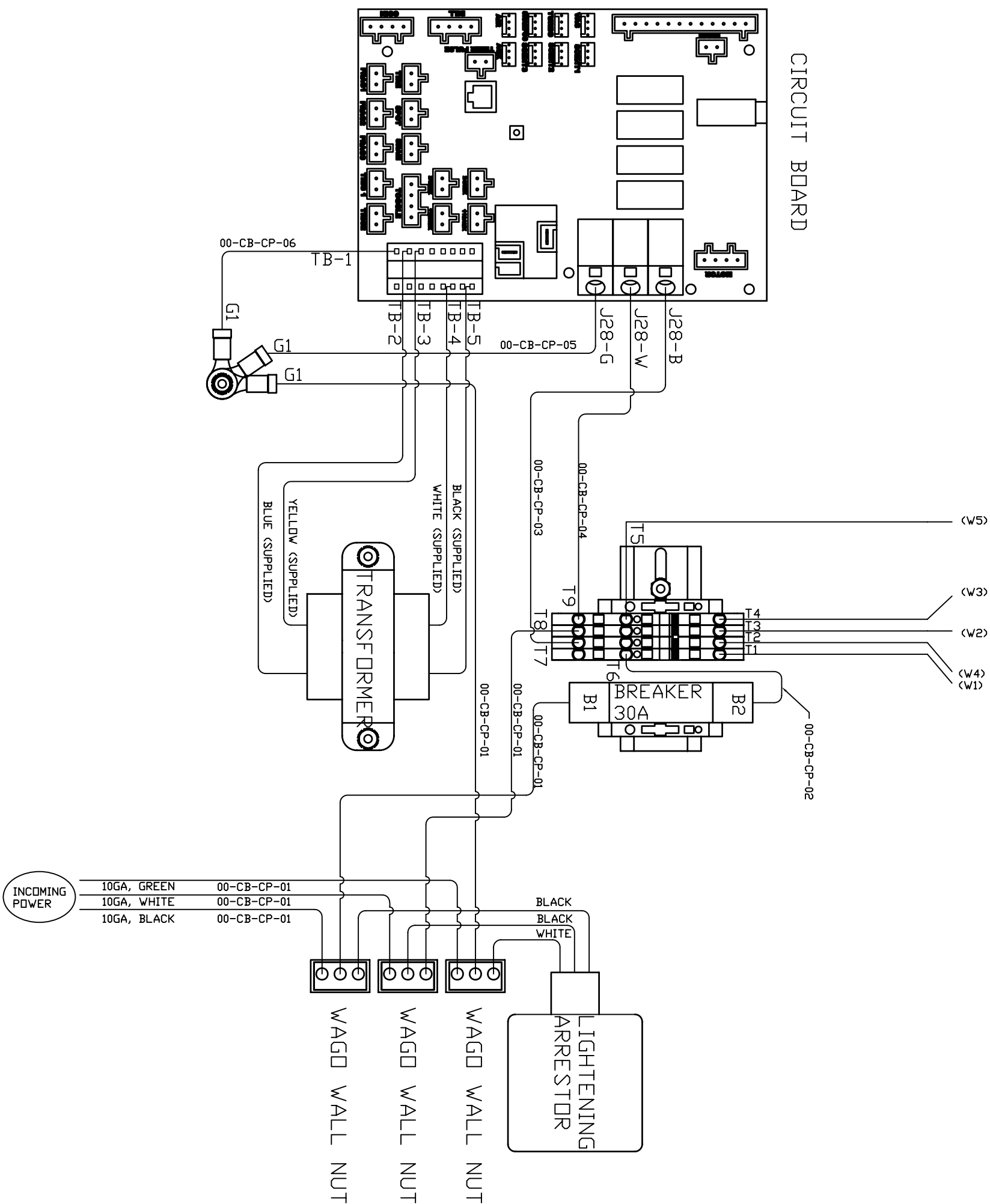
THIS DOCUMENT SHALL NOT BE  
REPRODUCED NOR SHALL THE  
INFORMATION THEREIN BE USED  
BY OR DISCLOSED TO OTHERS  
EXCEPT AS AUTHORIZED BY  
J.E. ADAMS INDUSTRIES


PART NO. S29000\_CB\_DOOR



UNSPECIFIED  
TOLERANCES  
1 PL ±.030  
2 PL ±.010  
3 PL ±.003  
ANGLE ±1.0°

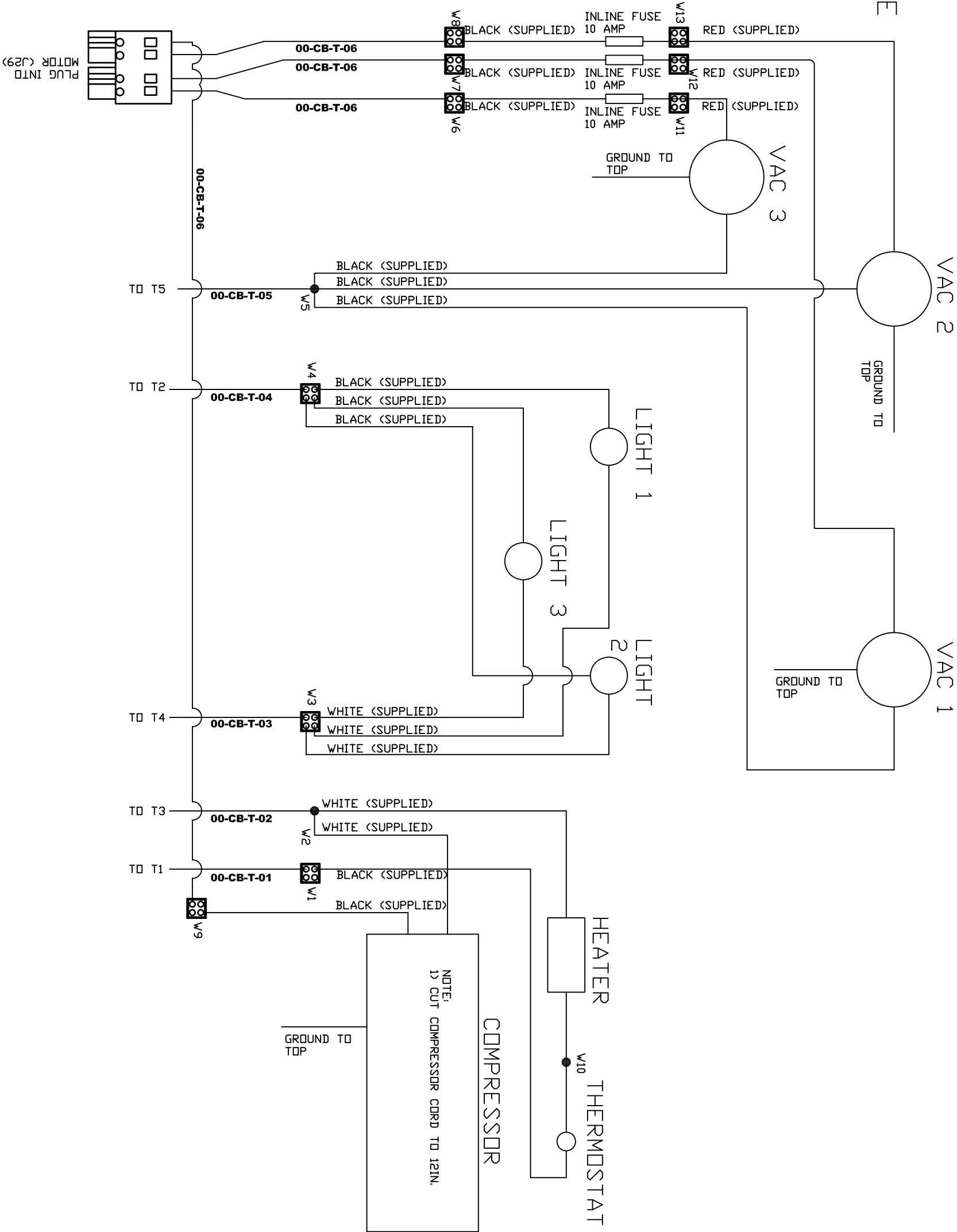
TITLE				
CONTROL DOOR WIRING 29000 SERIES UNIT				
DRAWN BY	CK	DATE 3-2009	SCALE -	REL. FOR PROD.
MATERIAL	-	PART NO.	S29000_CB_DOOR	REV. LEVEL B

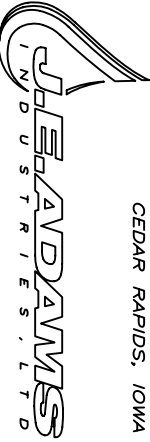


REV		NO.		DESCRIPTION		DATE		BY		THIS DOCUMENT SHALL NOT BE REPRODUCED NOR SHALL THE INFORMATION THEREIN BE USED BY OR DISCLOSED TO OTHERS EXCEPT AS AUTHORIZED BY J.E. ADAMS INDUSTRIES	
										PART NO. \$29000_CB_CONTROL	
				 CEDAR RAPIDS, IOWA J. E. A D A M S I N D U S T R I E S . L T D		UNSPECIFIED TOLERANCES 1 PL ±.030 2 PL ±.010 3 PL ±.003 ANGLE ±1.0°		TITLE CONTROL PANEL WIRING 29000 SERIES UNITS			
DRAWN BY		CK		DATE		3-2009		SCALE		-	
MATERIAL		-		PART NO.		\$29000_CB_CONTROL		REV. LEVEL		-	



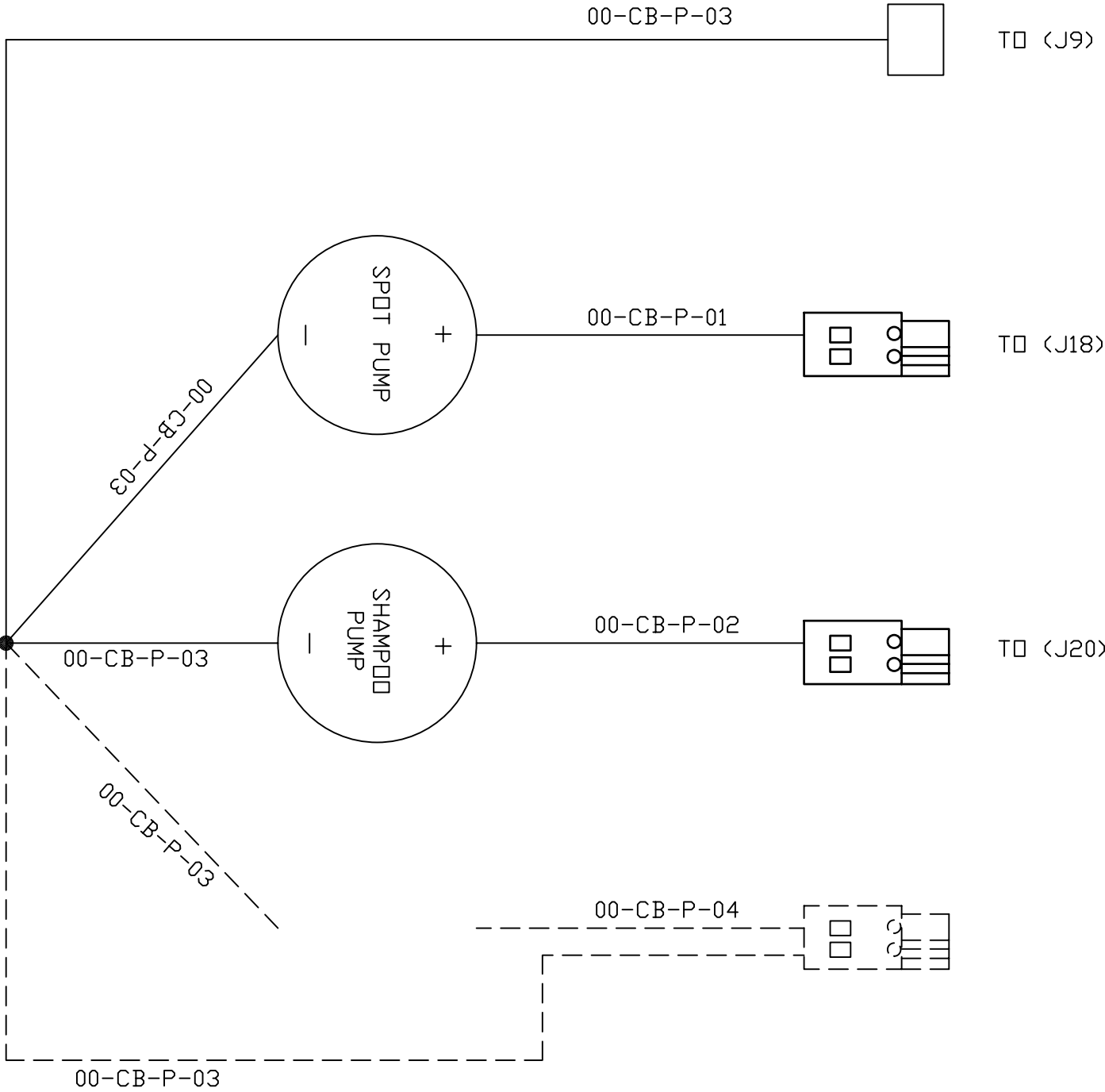
NOTE:  
1) VAC 3 AND FUSE  
NOT USED ON  
MODELS 29000-2M  
THRU 29003-2M.



THIS DOCUMENT SHALL NOT BE REPRODUCED NOR SHALL THE INFORMATION THEREIN BE USED BY OR DISCLOSED TO OTHERS EXCEPT AS AUTHORIZED BY J.E. ADAMS INDUSTRIES				
PART NO.		S29000_CB_TDP		
CEDAR RAPIDS, IOWA				
UNSPECIFIED TOLERANCES		TITLE		
1 PL ±.030		UNIT TDP WIRING 29000 SERIES UNIT		
2 PL ±.010				
3 PL ±.003				
ANGLE ±1.0°				
DRAWN BY		CK	DATE	3-2009
MATERIAL		-	PART NO.	S29000_CB-TDP
			REL. FOR PROD.	-
			REV. LEVEL	A

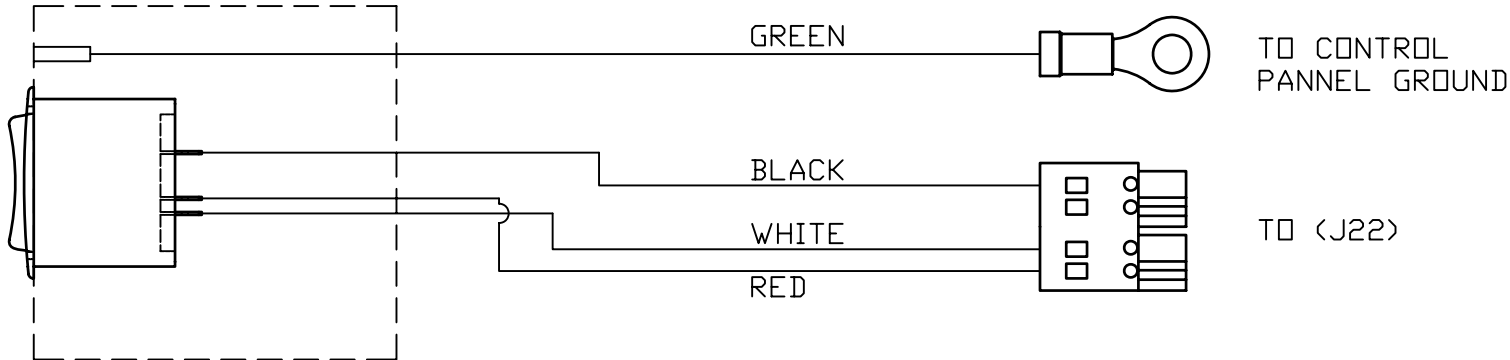
A	5892	ADDED NOTE 1	5-20-10	CK
REV	NO.	DESCRIPTION	DATE	BY

— NOT USED IN THIS ASSEMBLY, USED IN FRAGRANCE PUMP ASSEMBLY ONLY.

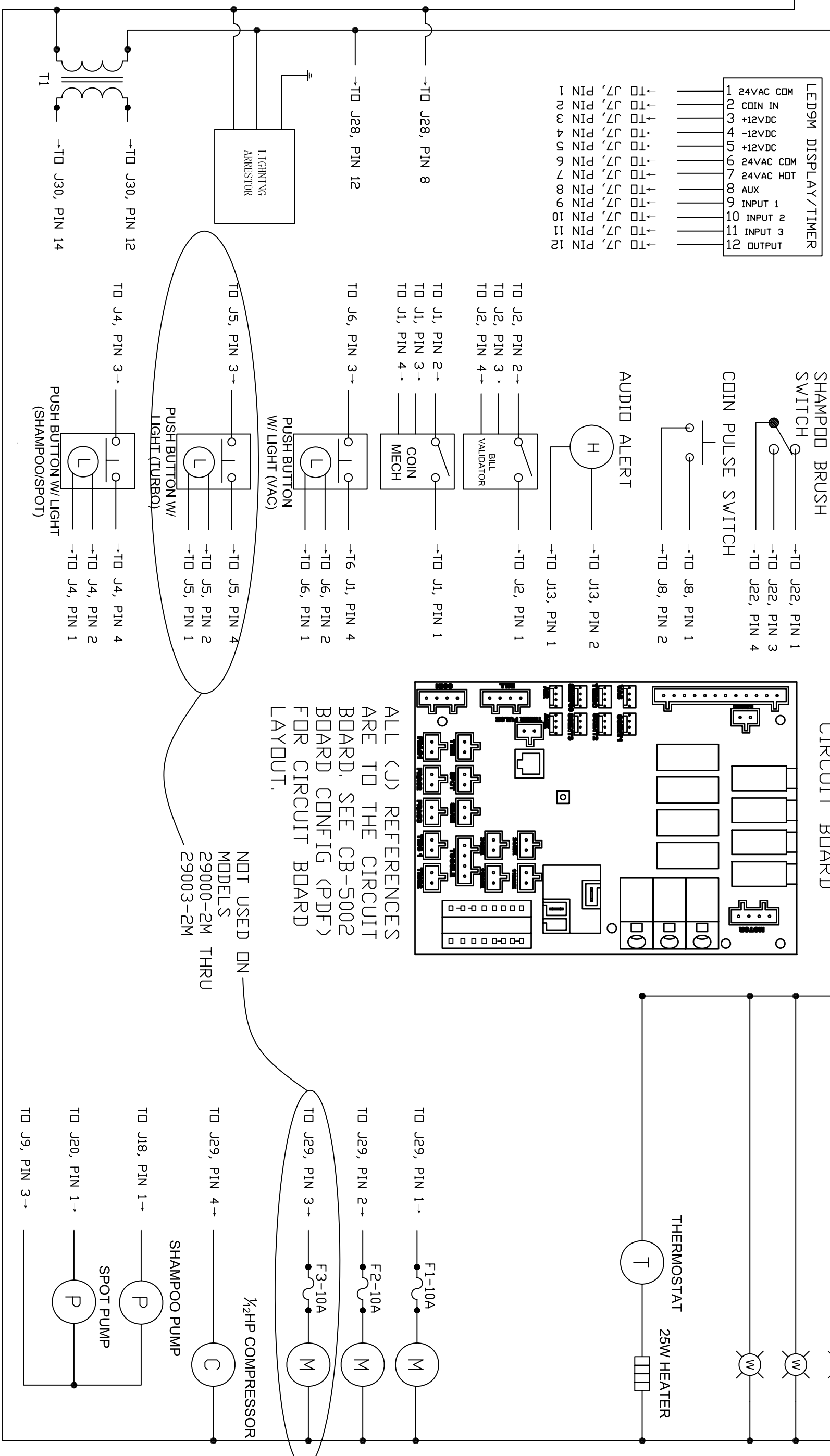
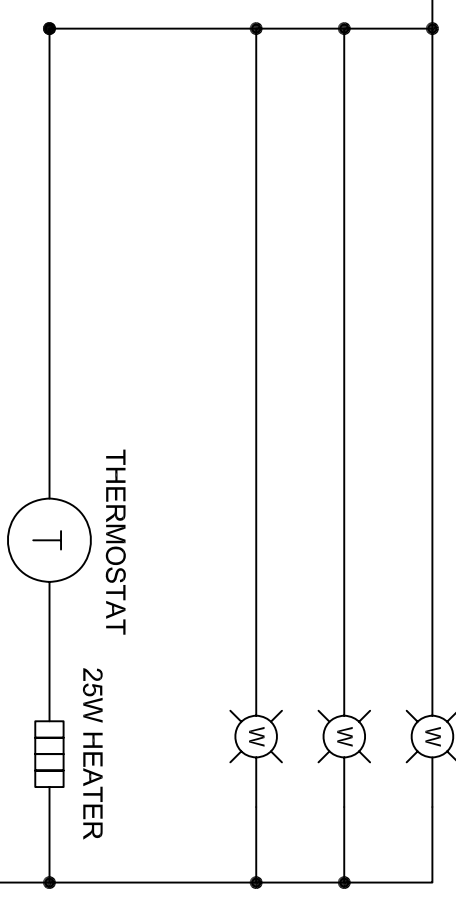
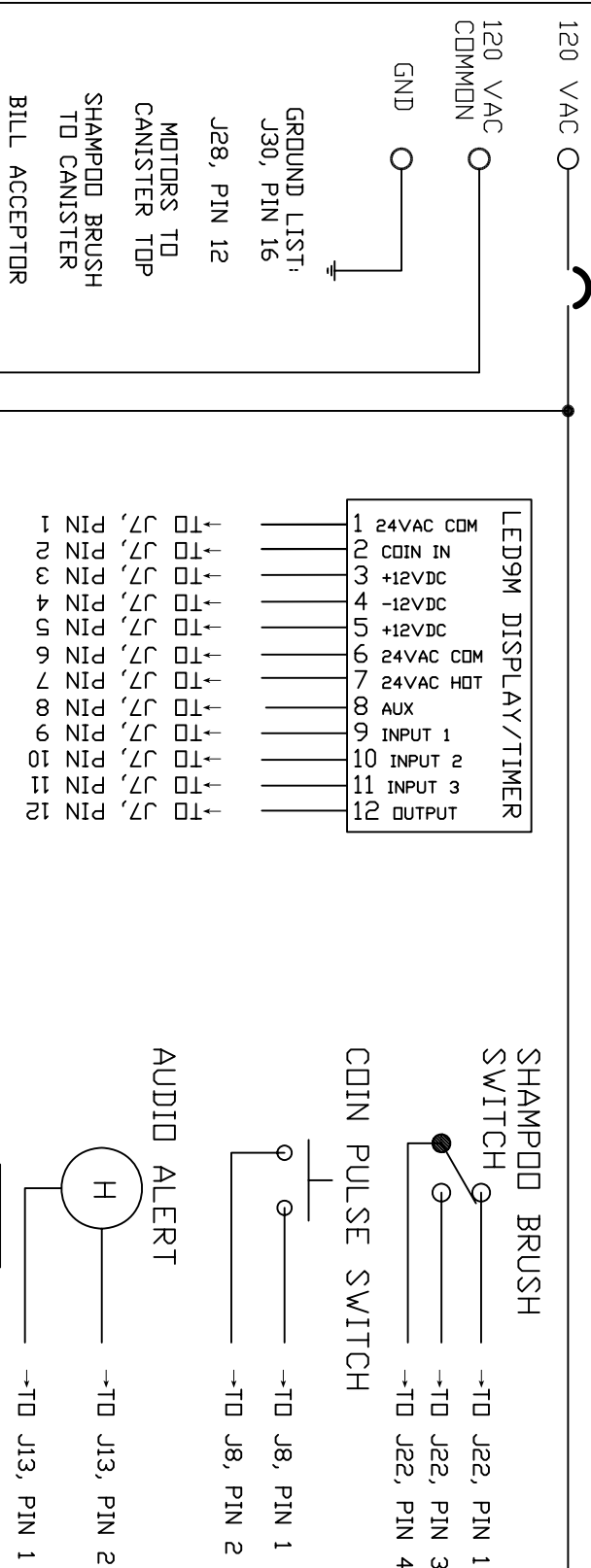


PUMP ASSEMBLY

SHAMPPOO BRUSH ASSEMBLY



THIS DOCUMENT SHALL NOT BE REPRODUCED NOR SHALL THE INFORMATION THEREIN BE USED BY OR DISCLOSED TO OTHERS EXCEPT AS AUTHORIZED BY J.E. ADAMS INDUSTRIES				PART NO. S29000_CB_PUMP		UNSPECIFIED TOLERANCES		TITLE			
				CEDAR RAPIDS, IOWA		1 PL ±.030		WIRE DIAGRAM, 29000 PUMP ASSEMBLY			
				J.E. ADAMS INDUSTRIES		2 PL ±.010		DRAWN CK			
						3 PL ±.003		DATE 3-16-09			
						ANGLE ±1.0°		SCALE -			
								REL. FOR PROD. -			
								PART NO. S29000_CB_PUMP			
								REV. LEVEL -			
REV	NO.	DESCRIPTION		DATE	BY						



ALL (J) REFERENCES  
ARE TO THE CIRCUIT  
BOARD. SEE CB-5002  
BOARD CONFIG (PDF)  
FOR CIRCUIT BOARD  
LAYOUT.

NOT USED ON-  
MODELS  
29000-2M THRU  
29003-2M

A		5893	ADDED INFO FOR 29000-2M THRU 29003-2M		5-20-10	CK
REV		NO.	DESCRIPTION		DATE	BY
<p>THIS DOCUMENT SHALL NOT BE REPRODUCED NOR SHALL THE INFORMATION THEREIN BE USED BY OR DISCLOSED TO OTHERS EXCEPT AS AUTHORIZED BY J.E. ADAMS INDUSTRIES</p>						
PART NO.		S29000-CB-ELEC				
 <p>CEDAR RAPIDS, IOWA</p>		<p>UNSPECIFIED TOLERANCES</p> <p>FRACT. <math>\pm 1/32</math></p> <p>2 PL <math>\pm .020</math></p> <p>3 PL <math>\pm .010</math></p> <p>ANGLE <math>\pm 1.0^\circ</math></p>				
<p>TITLE</p> <p>29000 ELECTRICAL SCHEMATIC W/CB</p>						
DRAWN BY		CK	DATE	3-09	SCALE	-
PART NO.		S29000-CB-ELEC		REL FOR PRD.	REV. LEVEL	
						A